

# Individual Hospital Performance Report Example Hospital, Anytown, USA

Based on Leapfrog Survey submitted December 23, 2008

**Important:** For internal use only! Not for public distribution.

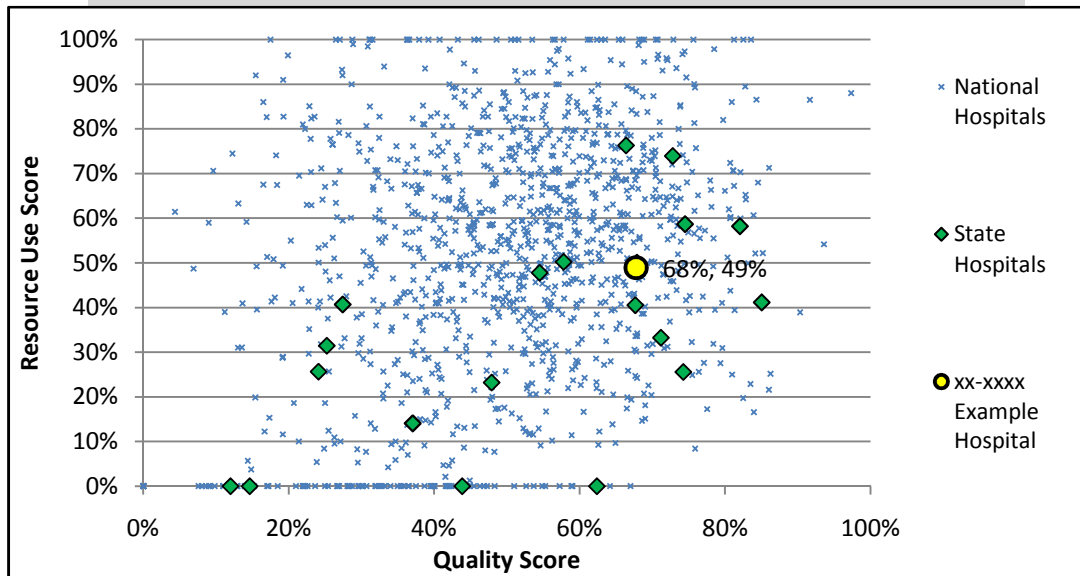
[Click here for a detailed description of the scoring process for the Leapfrog Hospital Rewards Program.](#)

	CPOE	IPS	CABG Quality	CABG Resource	PCI Quality	PCI Resource	AVR Results	AAA Results	AAA Process	Pancreatectomy Survival Predictor	Esophagectomy Survival Predictor	Bariatric Surgery Results	High Risk Delivery Results	AMI Quality	AMI Resource Use	Pneumonia Quality	Pneumonia Resource Use	Pressure Ulcer Rate	Injuries Rate	Never Events	Safe Practices LHRP Score	Quality Score	Resource Use Score	Efficiency Score
National average	36	46	64	50	64	57	68	65	42	39	39	64	61	49	48	52	53	41	43	71	57	51%	52%	52%
State average	53	56	63	33	52	47	57	72	55	48	54	68	64	50	34	69	29	34	35	76	51	54%	35%	48%
xx-xxxx Example Hospital	40	100	51	15	37	92	45	95	100	45	27	84	49	43	20	100	54	85	89	20	95	68%	49%	61%

Cells are color coded as follows:

- Green – 10 or more points better than the NATIONAL average
- Yellow – Within 10 points of the national average
- Red – 10 points or worse than the national average
- Gray – Not applicable

The graph below shows how the quality and efficiency of Example Hospital compare to other hospitals reporting data through the Leapfrog Survey.



The table below highlights the national decile of Example Hospital for the efficiency score (combination of quality and resource use).

Decile	Score Range
Top	71% or better
2nd	66% to 71%
3rd	61% to 66%
>>>> 4th	57% to 61%
5th	53% to 57%
6th	49% to 53%
7th	45% to 49%
8th	38% to 45%
9th	29% to 38%
10th	Less than 29%

All comparative hospital data is current as of 12/31/2008