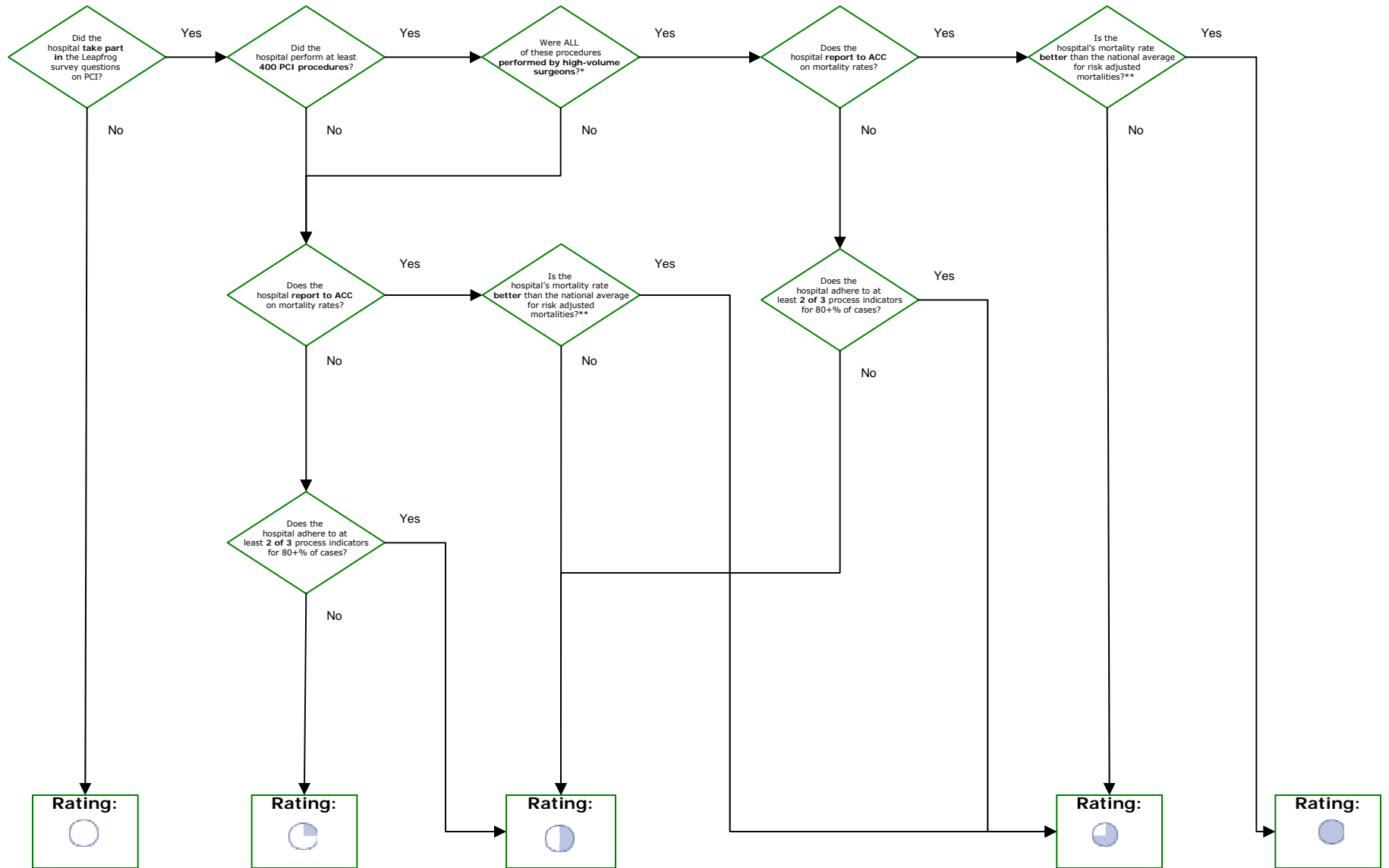


# Percutaneous Coronary Intervention (PCI) Scoring

Includes any percutaneous intervention that improves blood flow into the heart by reopening a clogged artery such as coronary angioplasties and stents.

*N/A in NY—Scoring is based on statewide outcomes in NY*



\* High-volume surgeons are those performing an annual average of  $\geq 75$  procedures at one or more facilities.  
 \*\* Credit based on hospital's actual mortality rate in comparison to the National Average, as indicated in the latest annual report from ACC.